



Softub[®]

Softub Canada
softubcanada.com



1

6

GREAT REASONS TO OWN A SOFTUB SPA

PORTABLE



Our largest Softub spa only weighs 88 lbs. It is so light it can easily be rolled into place by one person. Softub has taken easy installation to a new level, making it the most portable, full-featured spa in the world. You are never limited to one location. Moving? Take it with you. Houseboat? No problem. Installation is so easy and NO tools are required! Softub spas are perfect for outdoor and indoor use and roll through any standard doorway or gate.



2

HEATS WITHOUT A HEATER

The Softub spa was developed with our patented Heat Recovery Technology which incorporates the pump motor and heating unit into our single HydroMate® system. It plugs into a standard dedicated 15 amp/115 volt outlet, keeping energy costs as low as \$15-\$20 a month.



3

APPEARANCE



Softub spas come in six designer exterior colors that enhance any decor. Each spa is meticulously hand-crafted and undergoes rigorous testing to meet the highest standards. Beyond their beauty, Softub spas are built to last, offering both style and durability.



DESIGNED TO WITHSTAND ALL ENVIRONMENTS



Softub spas are designed for outdoor living; made from top quality marine-grade vinyl to ensure many years of enjoyment. Rain, snow or sunshine, the Softub spa will withstand any Canadian weather thrown its way. It's portable and easy to setup so you can enjoy your Softub indoors too!

EVERYTHING IS INCLUDED



With your purchase, you get the Softub spa, HydroMate® PowerPak™, High Density Insulated Cover, Security Locking Straps and a five-year limited warranty (one of the best in the industry).

COMFORTABLE



Softub spas are constructed for unsurpassed comfort. The soft, yet incredibly durable design of the Polybond™ interior provides comfort in any position. With our open design, there is no assigned seating, hard or slippery surfaces or hidden depths. Softub spas provide the perfect hydrotherapy environment allowing freedom of movement.

4



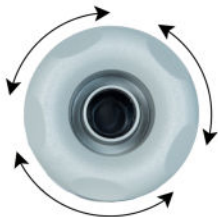
5



6



MEET THE POSEIDONX™ YOUR NEW UPGRADE!



SEE WHAT MAKES THE POSEIDON JET™ THE MOST POWERFUL IN ITS CLASS!

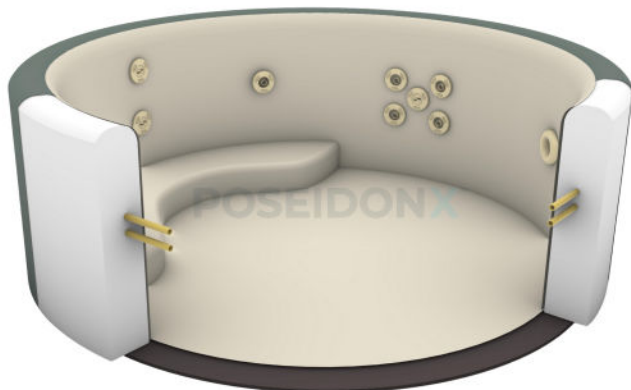
The PoseidonX™ spa jet layout provides customized hydrotherapy where you need it most. You control the hydrotherapy in your Softub spa with a simple twist of the Poseidon Jet face.

HERE IS HOW IT WORKS!

- Operating the Trident Diverter™ is effortless; each quarter turn lets you tailor your hydrotherapy experience for ultimate relaxation and rejuvenation.
 - With every turn, your soak transforms: drift into a soothing full-jet embrace, awaken your senses with the revitalizing PoseidonX™ X-jet layout, and power through an invigorating deep-tissue surge via the Poseidon Jet™, the ultimate expression of hydrotherapy.
- Total of 11 hydrotherapy jets
 - Poseidon Jet™, the most powerful jet in its class!
 - The Pulse Stream Jet channels deep-tissue power with a broad, pulsating flow – perfect for soothing sore muscles after a long day.
 - Dual multi-colored LED lights with several programs for underwater lighting
 - Adjustable direct stream jets target individual hydrotherapy needs
 - Dual stacked pulse stream spinning jets to relieve mid and lower back tension
 - Dual stacked vertical interchangeable lumbar massage jets
 - The PoseidonX™ X-jet layout channels deep-tissue power with a broad, pulsating flow, perfect for soothing sore muscles after a long day.
 - The Trident Diverter™ provides precise control over water flow, allowing you to direct it exactly where and how you want.
 - The addition of Reflectix® thermal insulation enhances overall energy efficiency by providing extra insulation and a radiant heat barrier.
 - The therapy station bench seat is ergonomically designed and strategically positioned to deliver targeted spinal and lumbar massage.



INSIDE THE POSEIDONX™





WHY SOFTUB® SPAS SHOULD BE YOUR CHOICE FOR HYDROTHERAPY

Softub spas are thoughtfully designed for true hydrotherapy, featuring strategically positioned jets and barrier-free seating that allow for unrestricted movement and comfort.

CHRONIC PAIN CONDITIONS

Soaking in a warm water spa such as a Softub may support relief of chronic pain and muscle-joint stiffness by combining warmth, buoyancy and hydro-motion. Warm water immersion can ease muscle tension and stiffness, and the buoyancy of water reduces effective body weight, relieving joint loading. Improved peripheral circulation in warm water further supports tissue delivery of oxygen and nutrients, and warmth may stimulate endorphin release as an endogenous analgesic mechanism.

FIBROMYALGIA SYNDROME

Aquatic therapy, defined as exercise or hydro-immersion in water, shows growing evidence for use in Fibromyalgia Syndrome (FMS). A 2024 systematic review found positive effects of aquatic exercise on pain and quality of life in FMS patients. A meta-analysis of aquatic therapy in FMS (published 2023) found improvements in pain and sleep quality, though heterogeneity was high. Thus, regular warm water therapy or water-based exercise (e.g., weekly sessions) may be a valid adjunct in FMS management.

ARTHRITIS

For osteoarthritis of the knee, a meta-analysis of randomized controlled trials to August 2023 showed that hydrotherapy significantly reduced pain intensity and improved functional status, with no serious adverse events reported. In other types of arthritis such as Rheumatoid Arthritis (RA), recent reviews show moderate evidence that hydrotherapy as part of physiotherapy reduces pain, improves mobility and quality of life. Therefore, warm-water buoyant settings like a spa can meaningfully assist movement and relieve symptoms in arthritis.

DIABETES

While warm-water exercise is attractive for people with diabetes who may have joint limitations or find land-based exercise difficult, direct high-quality evidence specific to hydrotherapy in diabetes (type 2) remains limited. A 2025 study in individuals with type 1 diabetes found that exercise in cool (22 °C) or thermoneutral water (32 °C) did not cause a greater drop in blood glucose versus land-exercise, though plasma insulin changed differently. Thus, while warm-water spas may support movement, improved circulation, and muscle use (which are beneficial in diabetes management), claims about direct glycaemic benefit should be tempered or framed as “potential” rather than proven.

SLEEP DISORDERS

Immersion in warm water before sleep is associated with improved sleep onset and quality via thermoregulatory mechanisms. Warming followed by gradual body cooling signals the body for sleep. Evidence supports warm-bath pre-bedtime as a non-pharmacologic sleep-improvement strategy, though specific trials for spa-soaking in chronic pain populations remain sparse.

ANXIETY AND STRESS REDUCTION

Warm water immersion and adjustable massage jets (such as in a Softub) deliver mechanical massage and soothing warmth, which promote muscle relaxation, increased circulation and may trigger endorphin release – thereby reducing stress, tension and anxiety. Though direct large-scale RCTs of spa jets are limited, the mechanistic basis (heat + hydro-massage) is plausible and consistent with physical-therapy practices.

We didn't invent hydrotherapy...we just made it better!

FACE THE FACTS

US

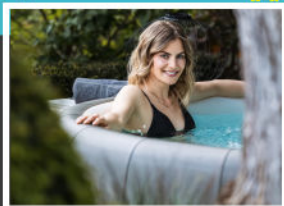
VS.

THEM

SITE PREP	Any adequate, load bearing smooth surface, outdoors or indoors. No additional costs in preparation.	Construction, excavation permits, or concrete pad may be necessary for installation
ELECTRICAL	Plugs into any dedicated 15 amp/115 volt outlet – no additional costs. Cord mounted Ground Fault Circuit Interrupter (GFCI) included.	Installation of a 230V electrical circuit is required. Additional GFCI protection may also be necessary. The cost of installation can be substantial.
INSTALLATION	Simple as 1, 2, 3 installation, and can be done by one person.	Costly crew, placement, plumbing, electrician costs, crane sometimes necessary.
PORTABILITY	Rolls through any standard doorway, making it easy to be moved from location to location.	Typically requires professional installation at cost. Usually not practical due to weight and site preparation involved.
THERMAL LID	Insulated folding lid assists in heat retention and efficiency. Convenient combination locking straps to secure spa when not in use.	May be an optional item with an additional expense.
JET POWER	Strategically placed, interchangeable hydro-jets for even hydrotherapy.	Hydrotherapy often uneven due to number and configuration of jets. Must use caution with slippery surface, and hard corners.
SAFETY	Constructed from a Polybond™ foam, there are no hard, slippery surfaces and no hidden depths.	Dangerous, hidden depths.
SEATING	Spacious barrier-free seating allows for a variety of positions and unrestricted movement for hydrotherapy routines.	Moulded, hard plastic, "assigned" seats that restrict activity and positioning.
COMFORT	Padded surfaces to surround yourself in cushioned comfort.	Hard surfaces that are just plain uncomfortable.
ENERGY CONSUMPTION	You can maintain your Softub spa at your desired water temperature for about \$15-\$20 per month, year-round.	Typically operate for \$50 or more per month.
SOFTUB SPAS® ECO-ADVANTAGE	We were green before it was cool! Softub spas far exceed stringent compliance requirements set forth by the California Energy Commission as well as National Standards. No harmful VOCs (Volatile Organic Compounds) are emitted during the manufacturing process, and excess materials are recyclable.	Many spa manufacturing methods emit harmful, environmentally-damaging VOCs (Volatile Organic Compounds). Many are constructed of materials that can't be recycled.
INFLATABLE & PORTABLE	Non-inflatable, ultra-portable, versatile, ease of relocation and single-person setup, jets and the heater run at the same time.	Hard-sided hot tubs have a permanent installation. Other plug and play can't run heat and jet at the same time, some are 3 season only.

SPECIFICATIONS

Sportster® 140 



Legend™ 220 



Resort™ 300 



Portico™ & PoseidonX™ 



Seating Capacity	2 person	4 person	6 person	6 person
Outer Diameter	150cm (59")	180cm (71")	198cm (78")	201cm (79")
Inner Diameter	127cm (50")	152cm (60")	168cm (66")	168cm (66")
Height	61cm (24")	61cm (24")	69cm (27")	69cm (27")
Number of Jets	4	5	7	8 & 11 <small>Portico™ comes with 8 jets & PoseidonX™ comes with 11 jets</small>
Water Capacity	530L (110gal)	833L (180gal)	1137L (260gal)	1052L (230gal)
Empty Weight	50 lbs	70 lbs	80 lbs	88 lbs
Filled Weight	1,773 lbs	2,547 lbs	3,450 lbs	3,190 lbs
Bi-Fold Lid	20 lbs	24 lbs	31 lbs	31 lbs
Hydromate	40 lbs	40 lbs	40 lbs	40 lbs

Exterior Colour Options

SynTex™



Graphite



Metallic Blue



Taupe

LeatherTex™



Mocha

Berwick



Tweed



Sand



Pearl



Blue

*limited exterior colours available with a Blue interior.

Interior Colour Options

For updated colour options go to www.softubcanada.com.

Colours shown are not an exact representation of color. Please request color swatch for colour accuracy.



SIMPLE HEATING TECHNOLOGY!

OVER 40 YEARS OF INNOVATION

THE HYDROMATE® SYSTEM

Our patented heat recovery system repurposes the pump motor's waste heat to efficiently warm your spa water to the perfect temperature. Water circulates through durable stainless-steel coils wrapped around the pump housing, maximizing energy efficiency while minimizing operating costs.

The built-in SmartChip® Power Monitoring System safeguards your Softub by preventing operation during low-voltage conditions that could damage the pump. Once power levels stabilize, SmartChip® automatically resets and restarts your spa—so you can relax knowing it's always protected and ready to go.

What does this technology mean for you?

- No expensive heating element to fail!
- Unsurpassed longevity of your Softub spa pump motor, as it is a water-cooled system.
- Plugs into a standard, dedicated 15 amp/115 volt outlet.
- Plug-and-play spa that can operate both heat and jets simultaneously.
- Softub products are registered with the North American Energy Commission and fall far below the maximum energy consumption allowance.
- Your Softub spa will maintain your desired temperature in all outdoor climates year-round!



A LEGACY OF INNOVATION AND COMFORT

Over 40 years ago, our founder, the late Tom Thornbury, and a team of engineers set out in a small garage with one goal — to design a hot tub that was affordable, durable, and incredibly comfortable. What began as a bold idea quickly became a breakthrough in spa innovation.

The success of Softub comes from a truly unique concept and the passion of our dedicated team of employees, dealers, and distributors around the world. Today, Softub stands as one of the most recognized names in the industry — a pioneer in portable spa design with numerous patented technologies that remain unmatched.

Now's the perfect time to join the hundreds of thousands of Softub owners already enjoying effortless relaxation and comfort, anywhere life takes them.



Softub Canada
Sudbury, Ontario
Canada

softubcanada.com

REV. 11/25

Dealer Info